

Regional Municipal Water Supply 5-Year Update of a 20-Year Plan, and Beyond

Donald J. Polmann, Ph.D., P.E.
Tampa Bay Water



February 27-28, 2008

- **Tampa Bay Water - Who we are and what we do**
- **Flexible, regional, integrated water supply system**
- **Municipal water supply planning**
- **20-year plan updates**
- **Protection, protection, more protection!**
- **Planning for the long-term...**

Tampa Bay Water – Who We Serve

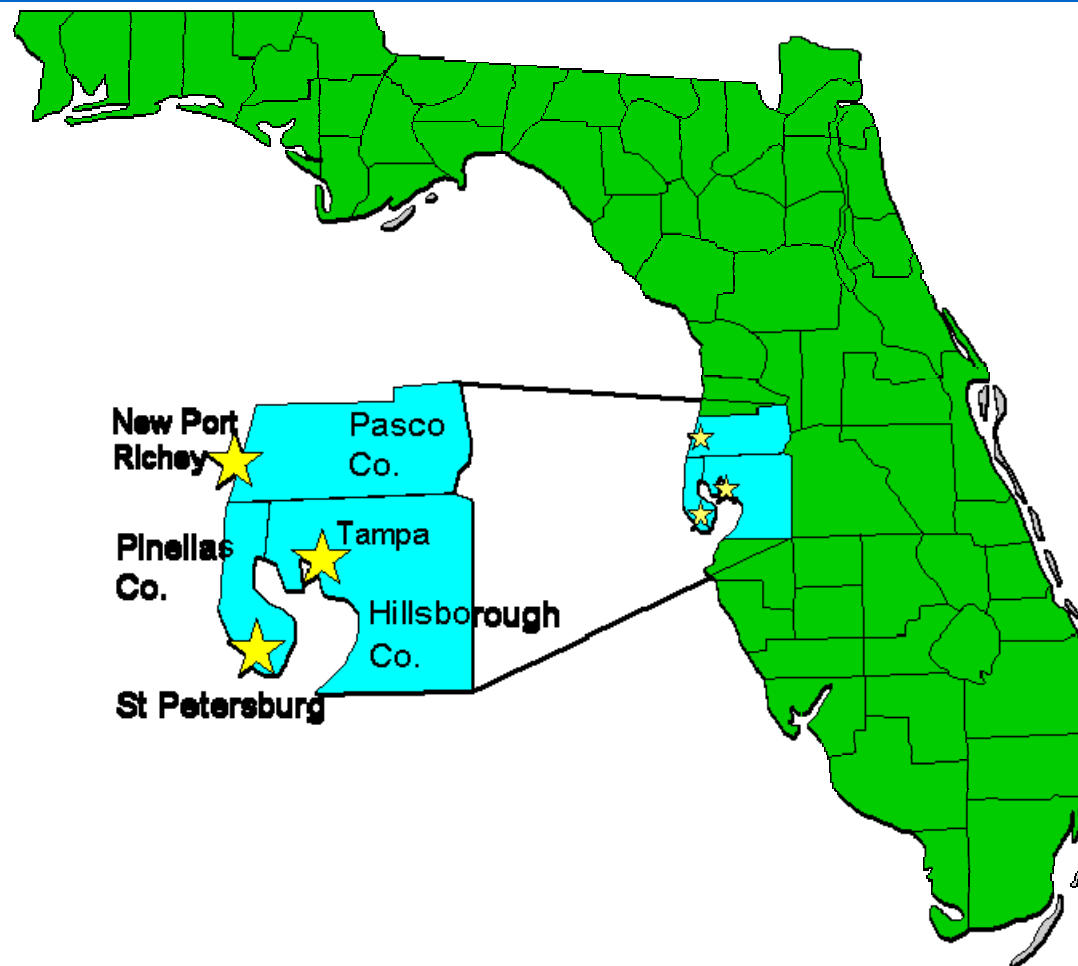
**2.5 Million
Residents Served**

**260 mgd total public
supply average daily
flow**

**Largest wholesale water
supplier in Florida**

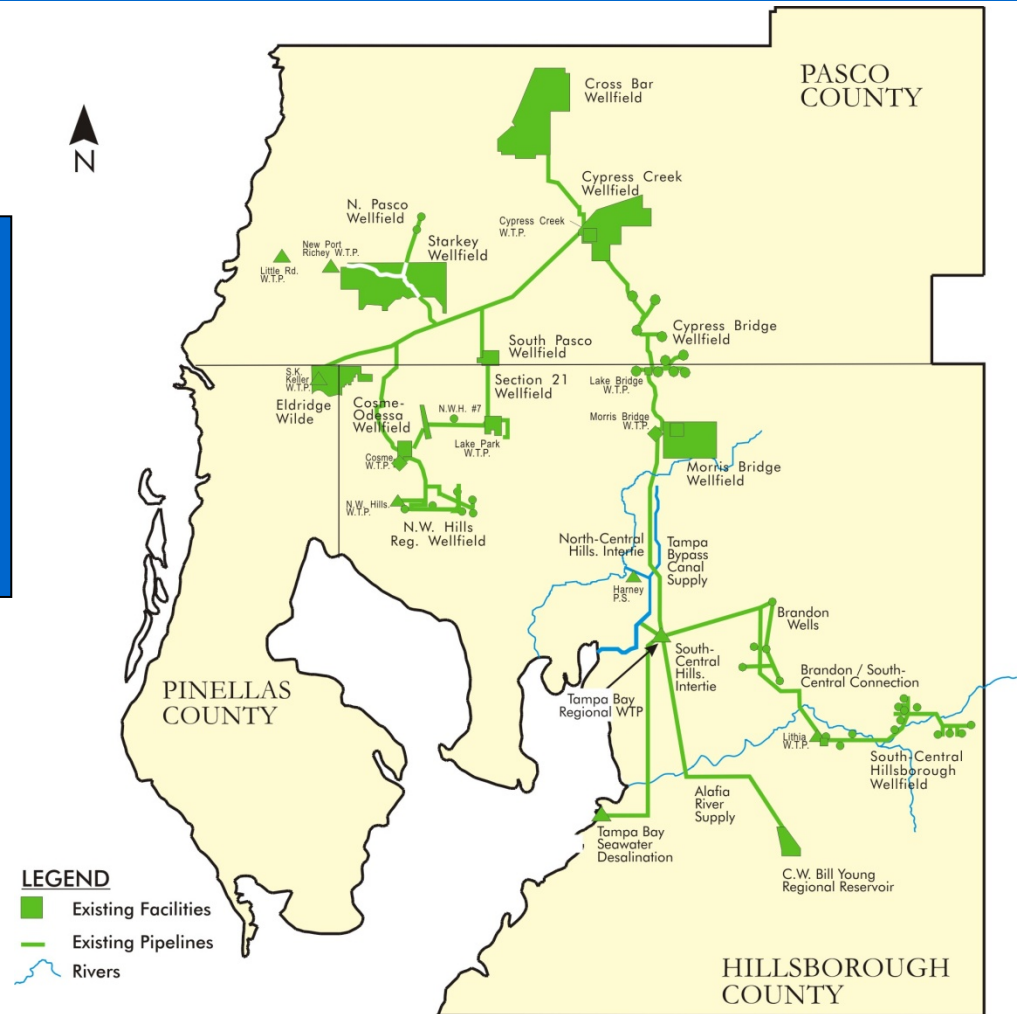
**Largest wholesale water
supplier in Southeast
United States**

**A unique system in North
America**



Integrated, Flexible and Diverse Water Supply System

**An integrated, *flexible*
and diverse system that
produces a *sustainable*
and reliable water supply**



MWP11-16-07 CDR
AG 11/16/2007

Tampa Bay Seawater Desalination



**25 mgd
with 10,032 membrane
cartridges**

Enhanced Surface Water System



**Tampa
Bypass
Canal**



**Alafia
River
Intake**



**Regional
Surface Water
Treatment
Plant**

C. W. Bill Young Regional Reservoir

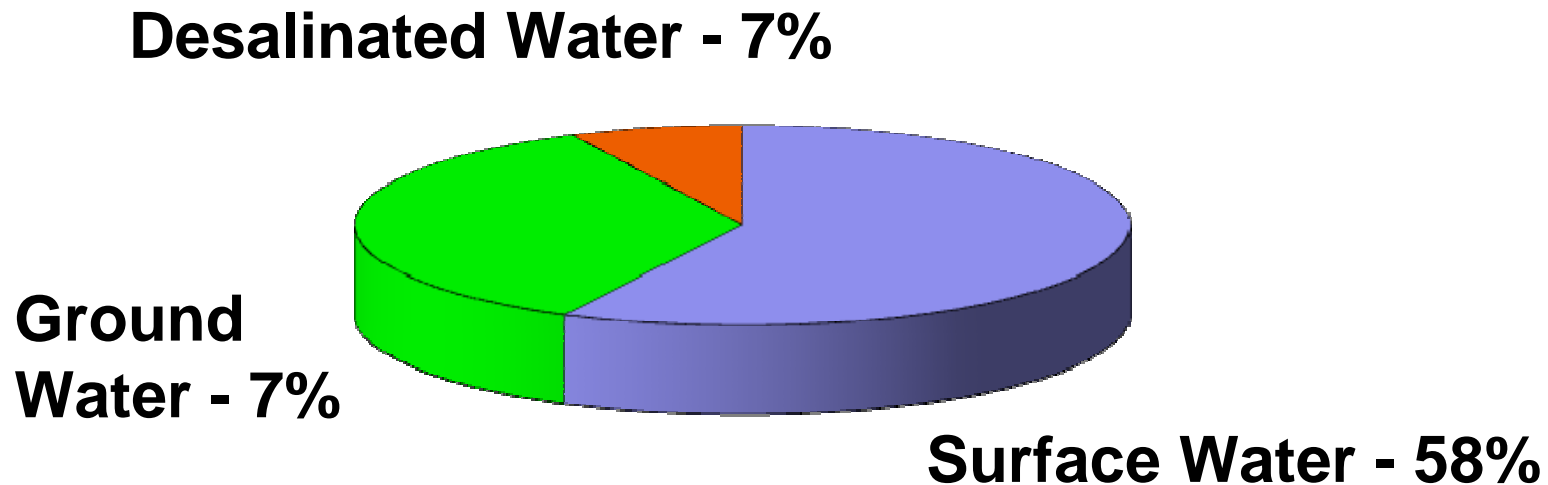


**Oct 2005 -
15.5 billion
gallons of
storage**

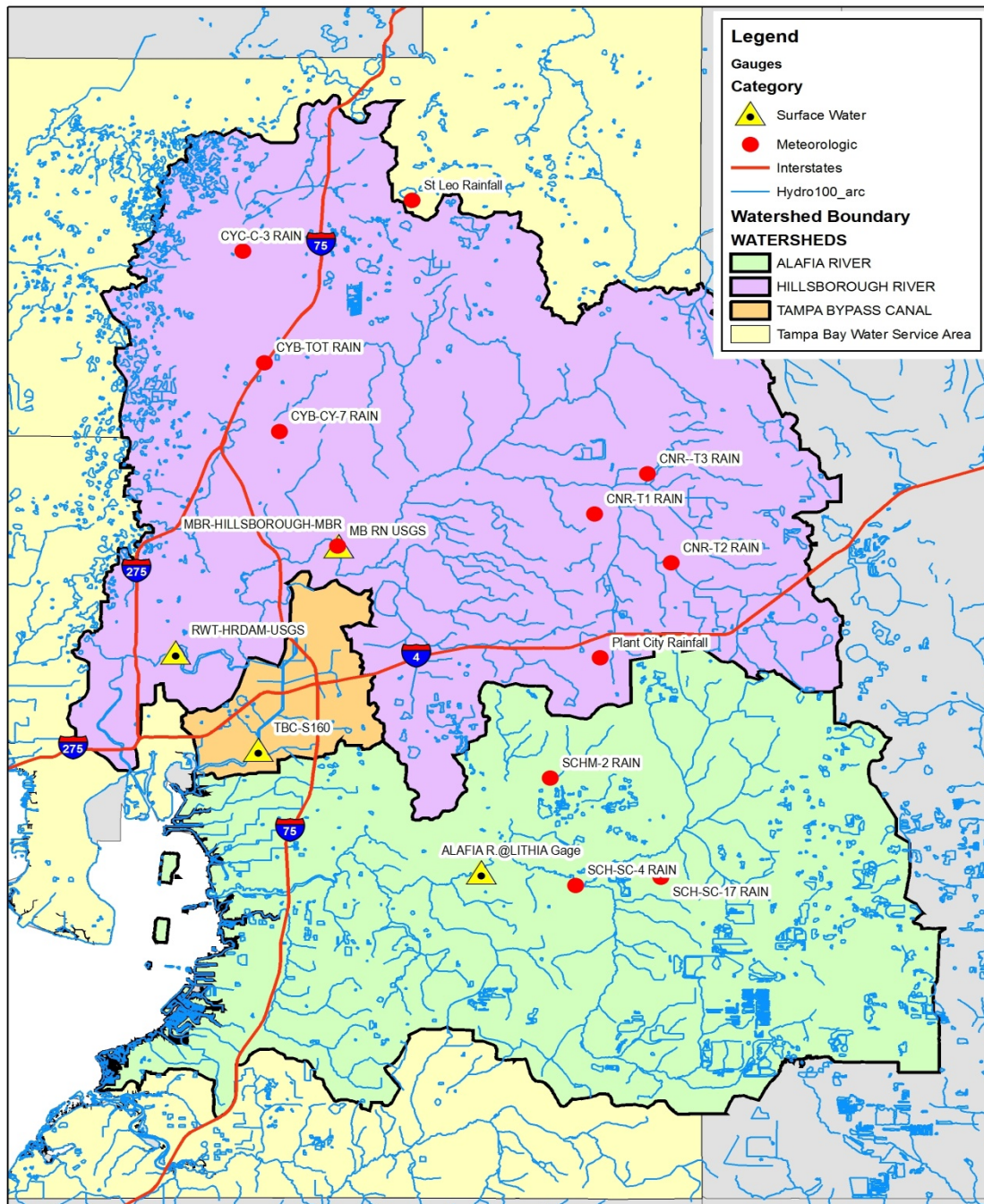
**July 2007 - Only 2
billion gallons of
storage
remaining**



Why is water resource protection important?
Why is climate variability important?



Failure to ... can be costly and can hinder ... goals

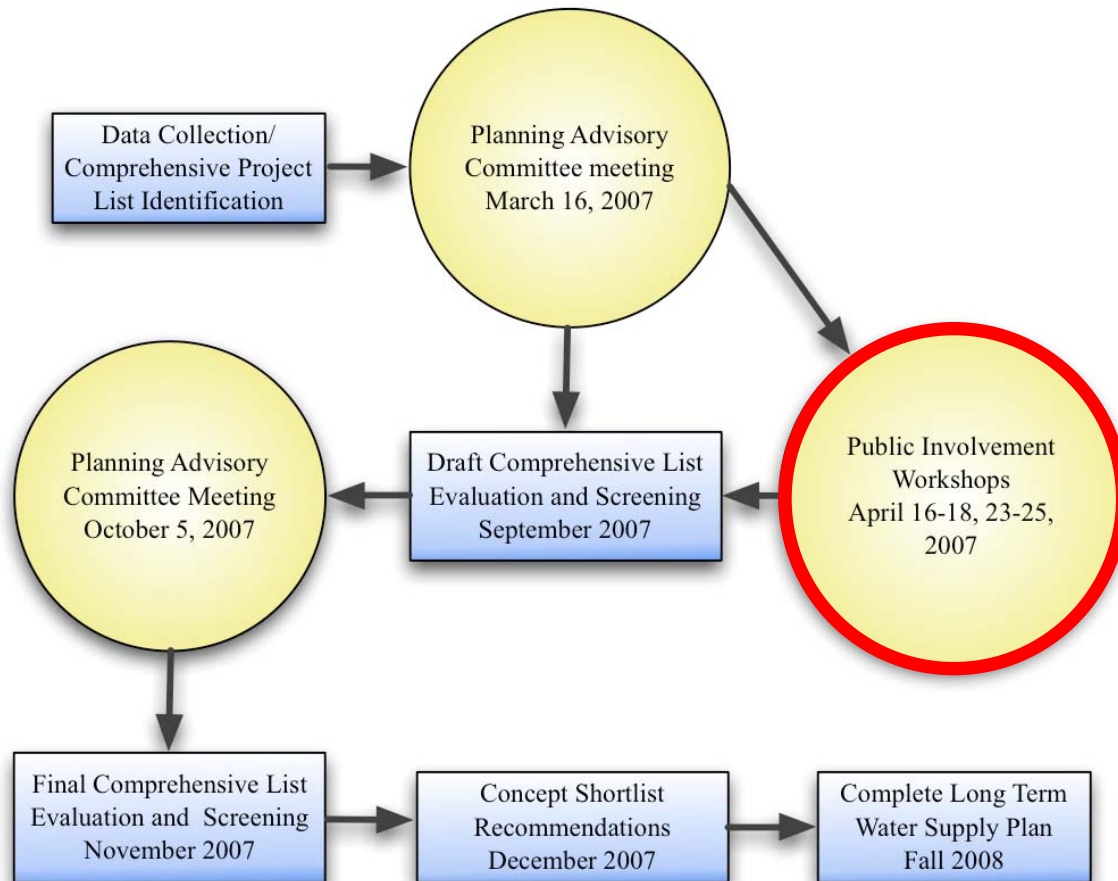


- **The Florida Water Plan**
- **District Water Management Plans**
 - **Regional Water Supply Plan**
- **Tampa Bay Water Master Water Plan**
 - **Long-Term Water Supply Plan**
 - **Master Water Plan Projects**
 - **System Configurations**
- **Local Government Comprehensive Plans**
 - **Water Supply Elements and 10-year Facility Workplans**

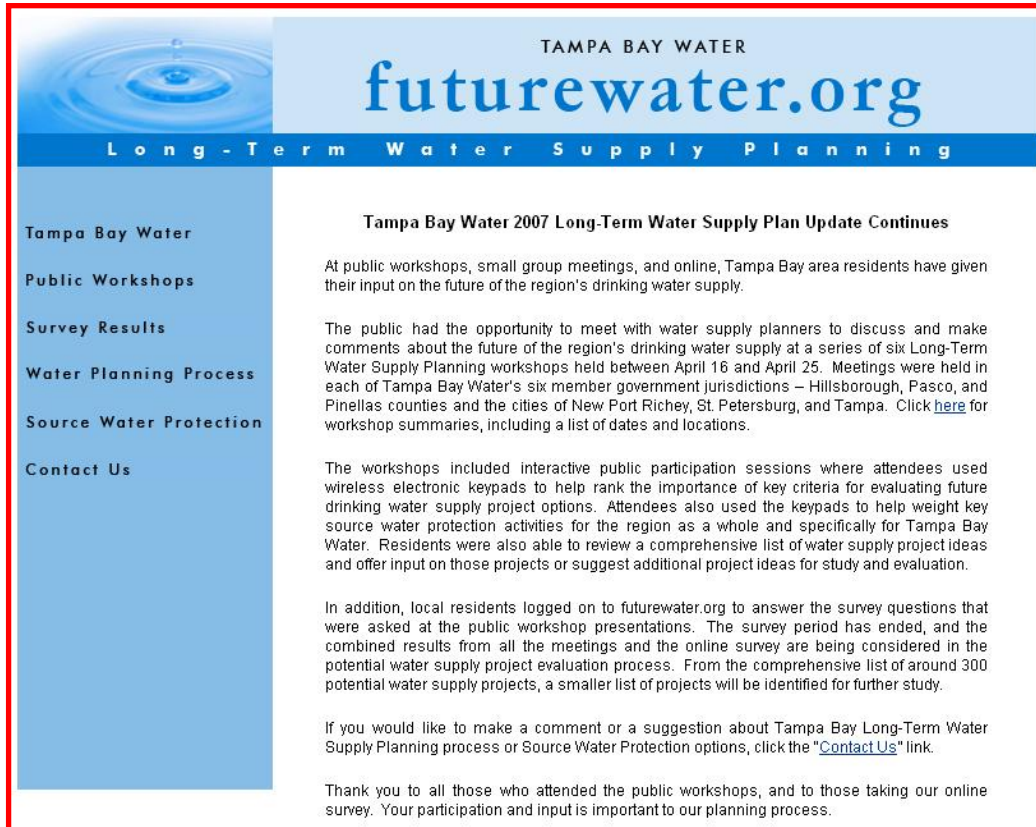
Planning Process Review

Public Workshops

- Six public workshops
One within the jurisdictional boundaries of each of Tampa Bay Water's member governments



Planning Process Review



The screenshot shows the Tampa Bay Water website with the URL **futurewater.org** and the heading **Long - Term Water Supply Planning**. The left sidebar contains a navigation menu with the following items: **Tampa Bay Water**, **Public Workshops**, **Survey Results**, **Water Planning Process**, **Source Water Protection**, and **Contact Us**. The main content area is titled **Tampa Bay Water 2007 Long-Term Water Supply Plan Update Continues**. It contains three paragraphs of text detailing public workshops, online surveys, and the evaluation process. The first paragraph states that residents have given input on the future of the region's drinking water supply. The second paragraph describes the public's opportunity to meet with planners and make comments about the future of the region's drinking water supply at a series of six Long-Term Water Supply Planning workshops held between April 16 and April 25. The third paragraph mentions that local residents logged on to futurewater.org to answer survey questions. The final paragraph thanks participants for their input.

TAMPA BAY WATER
futurewater.org
Long - Term Water Supply Planning

Tampa Bay Water 2007 Long-Term Water Supply Plan Update Continues

At public workshops, small group meetings, and online, Tampa Bay area residents have given their input on the future of the region's drinking water supply.

The public had the opportunity to meet with water supply planners to discuss and make comments about the future of the region's drinking water supply at a series of six Long-Term Water Supply Planning workshops held between April 16 and April 25. Meetings were held in each of Tampa Bay Water's six member government jurisdictions – Hillsborough, Pasco, and Pinellas counties and the cities of New Port Richey, St. Petersburg, and Tampa. Click [here](#) for workshop summaries, including a list of dates and locations.

The workshops included interactive public participation sessions where attendees used wireless electronic keypads to help rank the importance of key criteria for evaluating future drinking water supply project options. Attendees also used the keypads to help weight key source water protection activities for the region as a whole and specifically for Tampa Bay Water. Residents were also able to review a comprehensive list of water supply project ideas and offer input on those projects or suggest additional project ideas for study and evaluation.

In addition, local residents logged on to futurewater.org to answer the survey questions that were asked at the public workshop presentations. The survey period has ended, and the combined results from all the meetings and the online survey are being considered in the potential water supply project evaluation process. From the comprehensive list of around 300 potential water supply projects, a smaller list of projects will be identified for further study.

If you would like to make a comment or a suggestion about Tampa Bay Long-Term Water Supply Planning process or Source Water Protection options, click the "[Contact Us](#)" link.

Thank you to all those who attended the public workshops, and to those taking our online survey. Your participation and input is important to our planning process.

Website

**Same questions
from workshops &
meetings available
to Internet survey
participants**

Developing and implementing measures to protect the environment and the drinking water supply long-term



Criteria Ranking

Project Screening Criteria	Responses (percent)				
	Most Important	Important	Neutral	Less Important	Least Important
Environment and Source Water Protection	69	23	4	2	1
Implementation / Feasibility	16	54	19	10	1
Project Cost	8	36	24	19	14
Regulatory Requirements	16	38	23	13	10
Yield	16	51	19	7	7

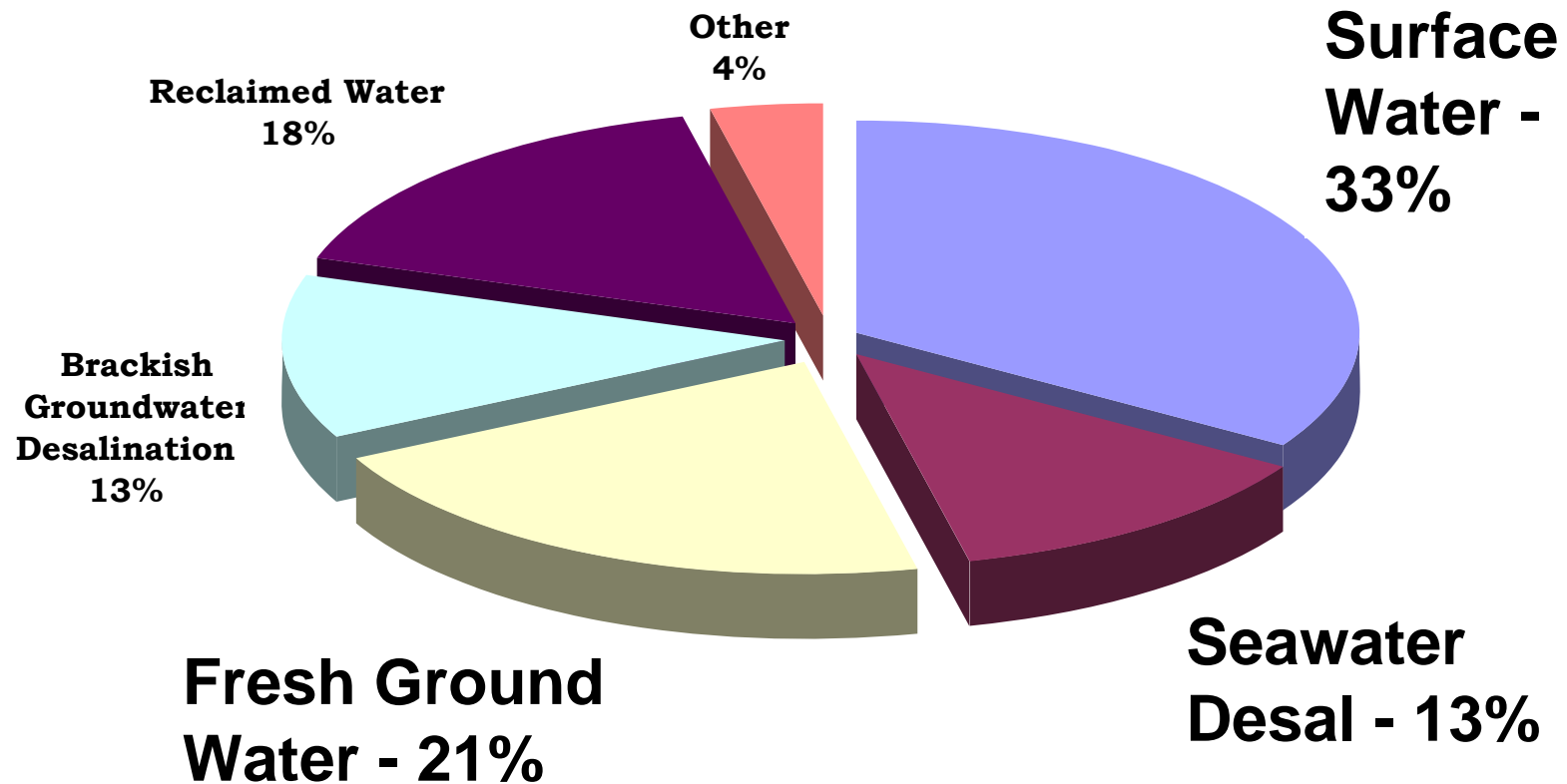
Criteria Ranking

Questions	Responses (percent)				
	Most Important	Important	Neutral	Less Important	Least Important
Public Information and Education	34	43	13	6	4
Protective Policies and Regulations	43	34	13	7	4
Land Acquisition Programs	34	40	13	8	4
Best Management Practices	34	41	15	7	3
Local Watershed Protection Actions	36	40	14	6	4

Ranking Results of Tampa Bay Water Source Water Protection Options

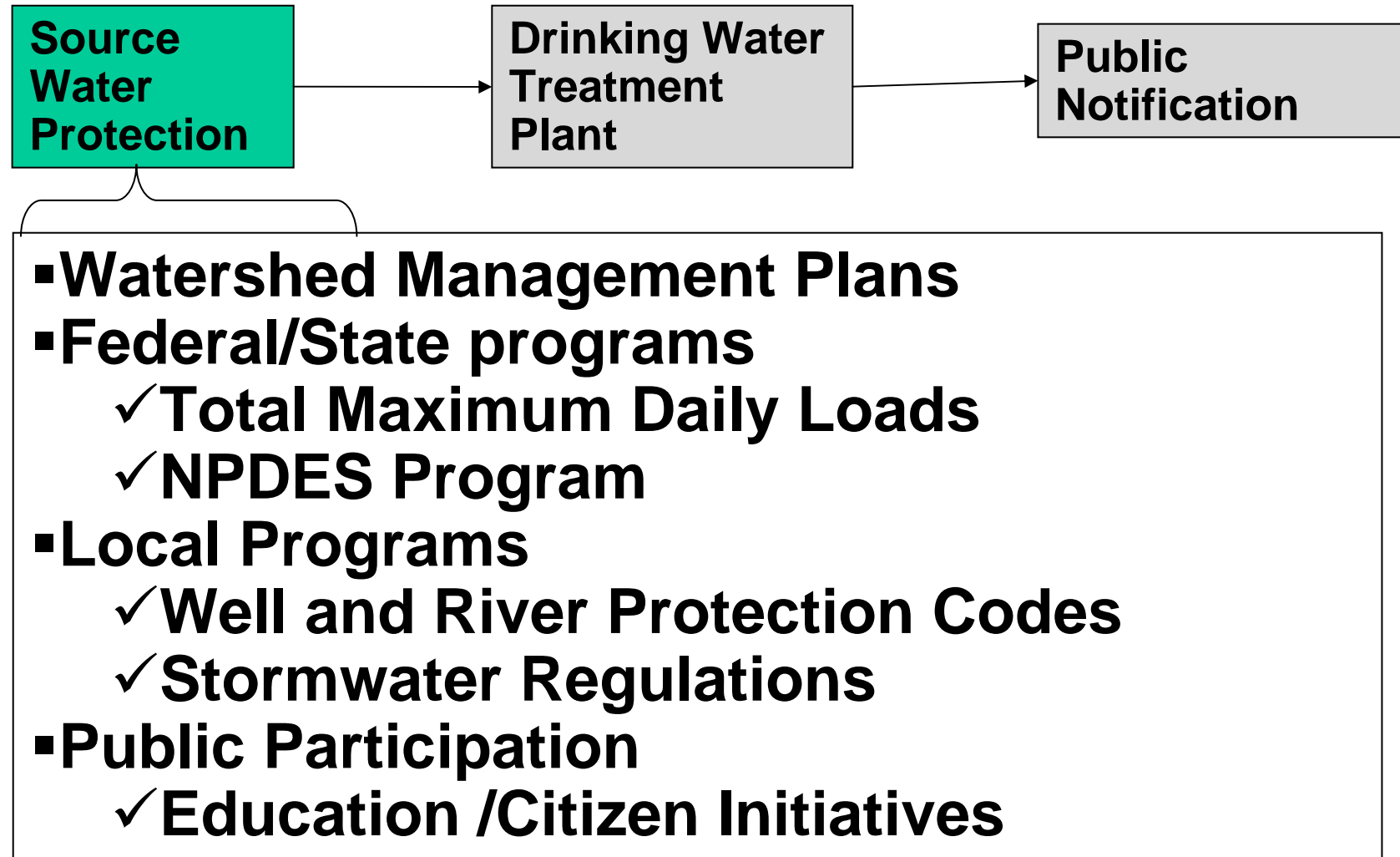
Questions	Responses (percent)		
	Higher Priority	Medium Priority	Lower Priority
Continue to advocate for protection of the water sources that provide the region's drinking water	77	17	6
Continue to work with its member governments on the development and implementation of land development ordinances that protect groundwater and surface water sources from pollution	69	24	7
Work with and support local and state governments agencies to identify and implement stormwater projects and best management practices to protect watersheds	54	38	8
Track and support proposals to prevent and/or minimize unanticipated industrial pollutant discharges in local water bodies that provide drinking water	57	27	15
Work with local governments to support the development and implementation of Low Impact Development in the region	60	25	15
Develop a specific program for research and outreach to developers on Low Impact Development as it relates to source water protection	48	36	16
Develop educational materials for the public on how they can help protect ground and surface water sources to benefit environment and regional drinking water supplies	48	36	16

Scored Projects By Source Type



- **State Regulations**
- **Local Ordinances**
- **Public Outreach and Education Programs**
- **Water Treatment**

Drinking Water Protection – The Multiple Barrier Approach



Drinking Water Protection – The Multiple Barrier Approach



- **The Florida Water Plan**
- **District Water Management Plans**
 - **Regional Water Supply Plan**
- **Tampa Bay Water Master Water Plan**
 - **Long-Term Water Supply Plan**
 - **Master Water Plan Projects**
 - **System Configurations**
- **Local Government Comprehensive Plans**
 - **Water Supply Elements and 10-year Facility Workplans**

**For You and Your
Family – Long-
term Planning
and Source Water
Protection**



What's Next

